



Welcome to the webinar!
We will begin shortly.

THE
An Exploration of Options



Distressed Institutions of Higher Education:

An Exploration of Options



H O S T

Visit us on the web at ELA.LAW



Scott Cole

Shareholder Chair,
Higher Education Practice

GRAY ROBINSON
ATTORNEYS | LOBBYISTS | CONSULTANTS



[Click here to view the US Employers COVID-19 Handbook](#)[ABOUT
US](#)[REGIONS](#)[GLOBAL EMPLOYER
HANDBOOK](#)[NEWS &
INSIGHTS](#)[WEBINARS &
EVENTS](#)[FIND A
LAWYER](#)

Global HR Legal Solutions

The Employment Law Alliance is a comprehensive global network of local labor, employment and immigration attorneys that delivers timely solutions to employment law matters wherever business takes place. HR executives and Corporate Counsel can access exceptional legal service from a trusted law firm network with our Find a Lawyer tool below. Use the drop down menu to select a single or multiple jurisdictions to begin your search.

[Find a Lawyer](#)[UPCOMING WEBINARS](#)[ON-DEMAND WEBINARS](#)[EVENTS](#)



HOST

Visit us on the web at ELA.LAW



Scott Cole

Shareholder Chair,
Higher Education Practice

GRAYROBINSON
ATTORNEYS | LOBBYISTS | CONSULTANTS





HOST

Visit us on the web at ELALAW

Q&A

Welcome to Q&A

Questions you ask will show up here. Only host and panelists will be able to see all questions.

Type your question here...





HOST

Visit us on the web at ELA.LAW

Q&A

Welcome to Q&A

Questions you ask will show up here. Only host and panelists will be able to see all questions.

RALPH: What is the current legal position on marijuana in the workplace?

☐ Send anonymously

Cancel

Send





The ELA Presents



Distressed Institutions of Higher Education: An Exploration of Options

Date: November 3, 2021

Time: 2:00 pm Eastern Daylight Time (6:00 pm GMT)

Duration: 1 hour



Event Resources

Presentation Slides & Certificate of Attendance

+

Resources provided by the speakers and their firms:

—



M O D E R A T O R

PAUL FRIGA, PH.D.

Clinical Associate Professor of Strategy,
UNC Kenan-Flagler Business School;
Strategic Transformation of Public Higher
Education Practice Leader, AGB
North Carolina

pnf@unc.edu

Panelists

Jennifer L. Curry



Shareholder
Baker, Donelson,
Bearman, Caldwell
& Berkowitz, PC
Louisiana
(Baltimore Office)

Stephen Donato



Co-Chair, Business
Restructuring,
Creditors' Rights &
Bankruptcy Group
Bond, Schoeneck &
King PLLC
New York

Kelley Kaufman



Member
McNees Wallace &
Nurick LLC
Pennsylvania-
Eastern

Eastern State University Scenario



Eastern State University

- Small, rural, regional public university
- Worst enrollment declines and deficits in state



Higher Education System

- 9 public universities across the state
- State appropriations shrinking



Collective bargaining

- Increased personnel costs 5% annually
- Faculty right to 18 months of severance

Eastern State University Scenario



Academics

- Strong Nursing program
- Weak Forestry & Liberal Arts programs
- Weak Agriculture program with strong in-system alternative

Finances

- Reserves expected to be exhausted in next fiscal year
- Bond rating downgraded
- Operating costs exceed revenues by 15%



Enrollments

- Down to 1,800 from peak of 5,000
- Expect 10% decline annually
- Authorized relaxed admissions and increased tuition discounts for out-of-state students

Accreditation at Risk

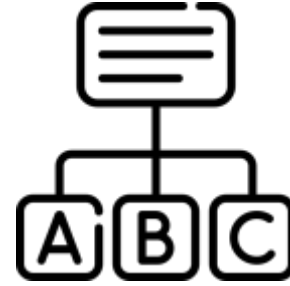


Trustees aware of issues, but so far inactive

Eastern State University Scenario Analysis



**Assess
Your
Situation**



**Develop
Options**



**Act
Decisively**

Eastern State University Scenario Analysis



Assess Your Situation

- Strategic
- Financial
- Leadership
- Risks (Organizational & Board/ Officer)



Develop Options



Act Decisively

Eastern State University Scenario Analysis



**Assess
Your
Situation**



**Develop
Options**

- Enrollment Growth
- Cost Management
- Consolidation (*e.g.*, PASSHE)
- Merger/Affiliation Opportunities



**Act
Decisively**

Eastern State University Scenario Analysis



**Assess
Your
Situation**



**Develop
Options**



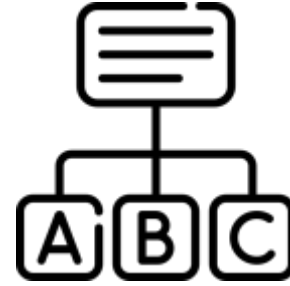
**Act
Decisively**

- PR/Communication Plan
- Shared Governance Activities
- Collective Bargaining
- Board Engagement

Eastern State University Scenario Takeaways



**Assess
Your
Situation**



**Develop
Options**



**Act
Decisively**

Questions?



Thank You!

M O D E R A T O R



Paul N. Friga

Clinical Associate Professor of
Strategy and Entrepreneurship
UNC Kenan Flagler Business School
North Carolina



Jennifer L. Curry

Shareholder
Baker, Donelson, Bearman, Caldwell
& Berkowitz, PC
Louisiana (Baltimore Office)



Stephen Donato

Co-Chair, Business Restructuring,
Creditors' Rights & Bankruptcy Group
Bond, Schoeneck & King PLLC
New York



Kelley Kaufman

Member
McNees Wallace & Nurick LLC
Pennsylvania- Eastern



The ELA Presents



Distressed Institutions of Higher Education: An Exploration of Options

Date: November 3, 2021

Time: 2:00 pm Eastern Daylight Time (6:00 pm GMT)

Duration: 1 hour

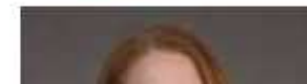


Speakers

Moderator



Presenter



Coming Up Next!

[Register today!](#)

November 9, 2021





Employment Matters

Employment Law Alliance

An Employment Law podcast series for human resource executives and in-house counsel which features conversations with labor and employment lawyers with global expertise on key employment law topics and trends, immigration news and other important HR legal solutions for global and multinational companies.



Listen to the Employment Matters Podcast

Continuing Education Credit



The ELA Presents



Distressed Institutions of Higher Education: An Exploration of Options

Date: November 3, 2021

Time: 2:00 pm Eastern Daylight Time (6:00 pm GMT)

Duration: 1 hour



Event Resources

Presentation Slides & Certificate of Attendance



Resources provided by the speakers and their firms:



Continuing Education Credit



This program is valid for **1.00** PDCs

Course Number: **21-K252R**

Visit www.SHRMcertification.org to submit PDCs

A **Certificate of Attendance** and supporting materials are available for download in the resources tab and will also be included in your follow-up materials sent via email. Attendees seeking continuing education credit should submit these materials directly to the appropriate organization.

To listen to any past ELA webinar, visit our
OnDemand webpage:

[View OnDemand Library](#)

For More Information:

Please contact our webinars team:

webinars@ela.law



[@elaglobal](https://twitter.com/elaglobal)



[Employment Law Alliance](https://www.linkedin.com/company/employment-law-alliance)



**Employment
Law Alliance**

